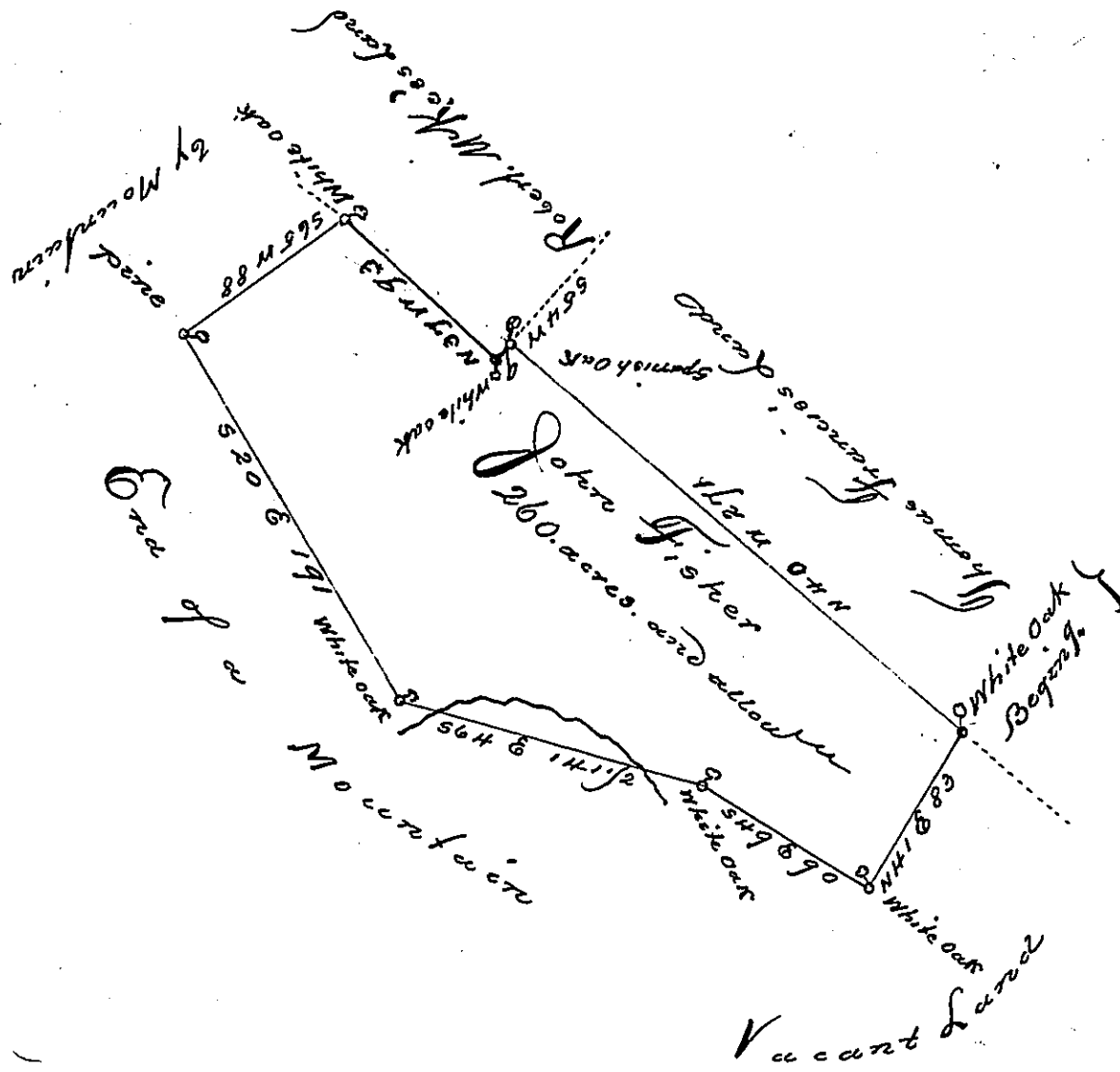


see C 130-263



The Draught of a Tract of Land, called The Bear Garden situated in Kishicoquillis Valley Cumberland County containing Two Hundred sixty acres with the usual allow of six acres p. Cent for Roads. Survey'd the 20th of November Anno Dom. 1768. For John Fisher In pursuance of an Order of survey Bearing Date at Philad^a the 29th day of July Anno Dom. 1768. and numbered 5116

P. Wm Maclay d. J.

To John Lukens Esqr.
 Secy. of Pennsylvania

IN TESTIMONY that the above is a copy of the original remaining on file in the Department of Internal Affairs of Pennsylvania, made conformably to an Act of Assembly approved the 16th day of February, 1833, I have hereunto set my Hand and caused the Seal of said Department to be affixed at Harrisburg, this fifth day of September 1899,

James W. Latta
 Secretary of Internal Affairs.